



GOODYEAR



MAZDASPEED
MOTORSPORTS DEVELOPMENT

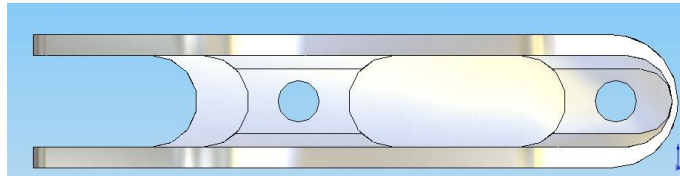


Technical Memo

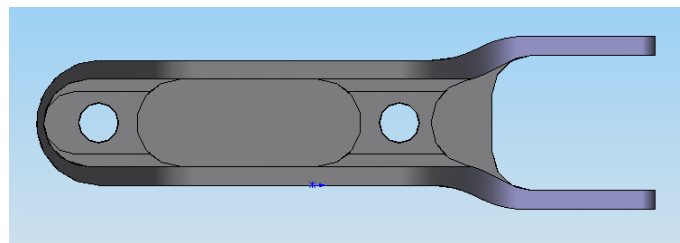
To: Star Mazda Series Competitors
From: Star Race Cars
Date: 26.April.2011
Re: Part Updates - 010-543, 140-569, 120-524

The ackerman arm has undergone a change in response to customer request. The change will involve a new ackerman arm (010-543, \$95.14 each) to replace the previous version 010-503 (010-503 will no longer be available). The new design, 010-543, will be the only ackerman arm available for the 2011 season and will be made mandatory for the 2012 season. The change is described generally below:

Old Ackerman Arm (010-503) Profile:

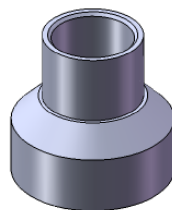


New Ackerman Arm (010-543) Profile:



The new ackerman arm will require new top hats (140-569, \$9.12 each). Top hats will not be allowed to be interchanged between the two designs.

New Top Hat (140-569)



The new design will require a square 5/16 Rod End available under Star Race Cars part number 120-524 (\$45.99).

Bump steer adjustment window will be kept the same between both designs. Teams will be allowed to adjust the bump steer using two .062 thick AN4 Washers or four .032 thin AN4 washers.

The update is currently available for purchase.